

CS 9600 FAMILY

 **Carestream**
DENTAL



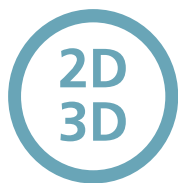
SO SMART,
YET SO SIMPLE



INNOVATION DRIVES PRECISION

There's nothing simple about your daily work. But now there is a simpler way for you to capture the images you need to achieve faster diagnoses and treatment plans.

The groundbreaking CS 9600 enables new levels of image quality, usability and, ultimately, precise diagnostic capabilities. The system features intelligent innovations and automated workflow technologies to ensure reliable patient positioning and reproducible image quality—*independent of operator skills*. And for a future beyond today, the system can grow with your practice thanks to upgradeable fields of view, versatile imaging options and added-value software.



MULTI-FUNCTIONAL SYSTEM

Multi-functional imaging systems blend 2D panoramic technology and CBCT imaging with 3D model scanning¹ and 3D facial scanning¹ to create one powerful unit, which can also be upgraded to include cephalometric imaging.¹

¹ Work-in-progress, not available for sale

CS 9600

DESIGNED FOR FIRST-TIME- RIGHT IMAGING

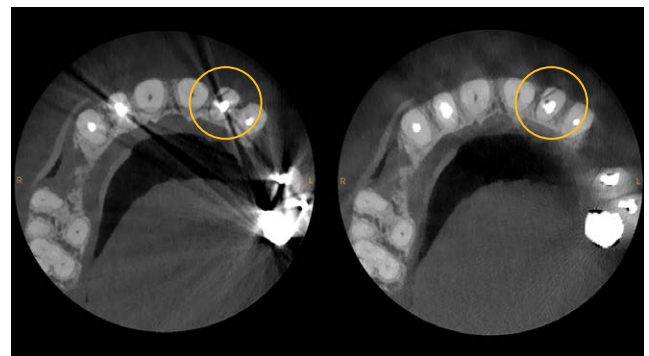
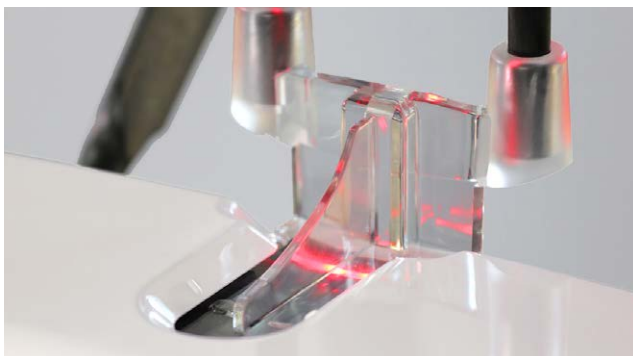
As the most advanced CBCT unit in its category, the CS 9600 features multiple advances that enable you and your staff to achieve high-quality, reproducible images with minimal experience using the system. Its intuitive workflow and cutting-edge technologies bring a new level of automation and simplicity to dental and maxillofacial imaging.

The unit comes with breakthrough innovations, such as Live Positioning Assistant, video cameras and SmartAuto¹ technology, to ensure correct and consistent patient positioning—helping your team capture accurate scans on the first try.



▶ STABLE POSITIONING

Patient can be scanned standing or seated using the optional removable seat¹ that maximizes patient stability and minimizes risk of motion.



LIVE POSITIONING ASSISTANT
Patients are positioned using cameras, while live patient views are displayed on the touch-screen for easy and exact positioning.

USER-FRIENDLY SMARTPAD
Intuitive SmartPad and clear interface guide the user through the exam, simplifying the procedure from exam setup to image quality control.

MORE POWER, LESS ARTIFACTS, LESS DOSE
The 120 kV high-power imaging chain¹ helps reduce artifacts and improve contrasts while reducing effective dose for CBCT exams.

SMART TECHNOLOGIES
SmartAuto Pan¹ and SmartAuto 3D¹ analyze the patient morphology to automatically calculate the right exposure settings and trajectory, or to precisely define the field-of-view position.

CS MAR
CS MAR¹ drastically reduces metal artifacts and even lets you explore images dynamically—with or without MAR filter—for more confident diagnoses.

CS FACE SCAN
Capture realistic 3D facial photos with the optional CS Face Scan,² and automatically superimpose the surface scan with CBCT images and 3D models.



CS Advantage

Stay tuned and covered. Enroll in CS Advantage.

Get the extended warranty coverage, software updates, training and support you need to ensure the best possible experience with your equipment purchase. It's easy with our CS Advantage plan. Contact your Carestream Dental representative for more information.

¹ Option

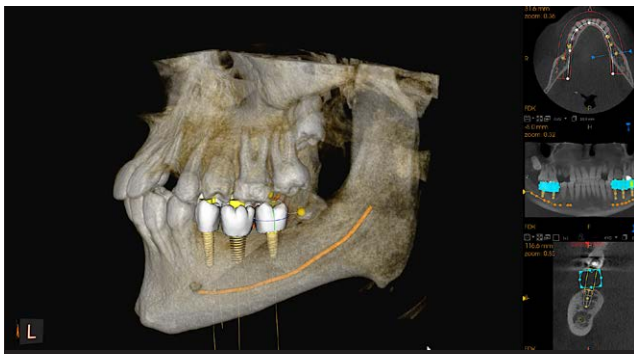
² Option – Work-in-progress, not available for sale

Panoramic



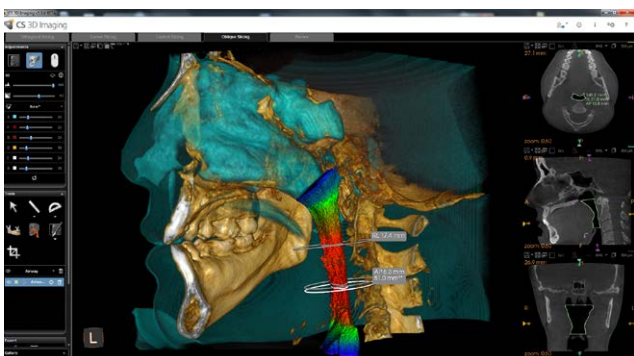
A complete range of panoramic programs cover all of your routine needs, including, but not limited to extraoral bitewing, extraoral FMS and low dose options

Implants



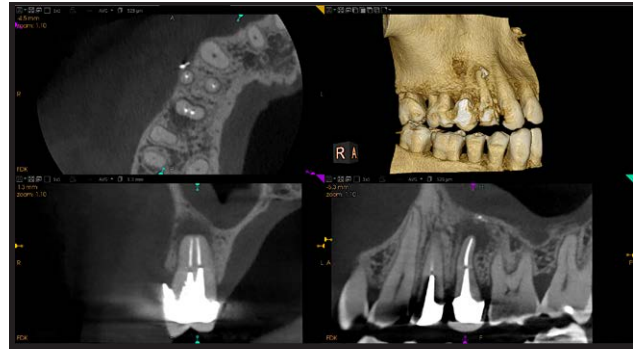
Plan implants with confidence using our advanced implant planning software with customizable virtual crowns and comprehensive implant library.

Airway Analysis



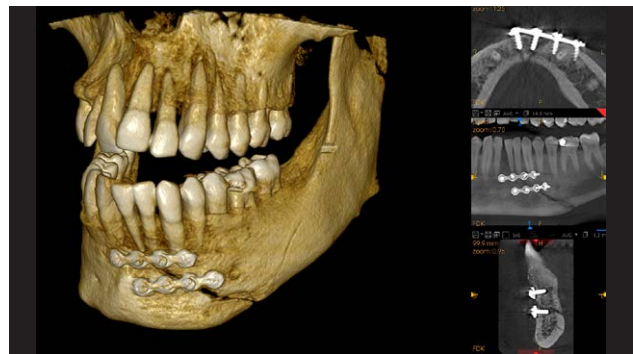
Analyze the upper airway with automatic measurements and color-coded 3D views to easily visualize constrictions and changes in airway.

Endodontics



High resolution images (up to 75 μm) are perfectly suited for endodontic indications and can now be captured on focused FOV, single and dual jaw modes.

Oral and Maxillofacial Surgery



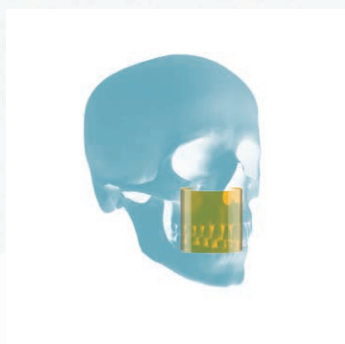
With up to 14 fields of view, including full skull and TMJ imaging, the CS 9600 is ideal for maxillofacial surgery—including orthognathics.

3D Facial Scanning

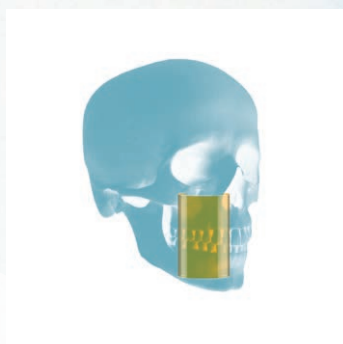


Capture the realistic 3D image of the patient's face and combine it with the CBCT image.

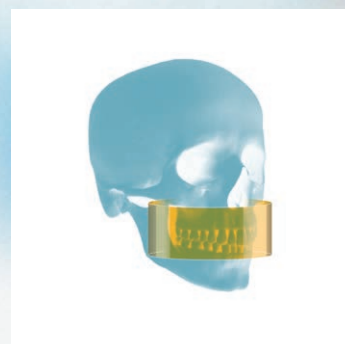
UP TO 14 FIELDS OF VIEW



4 cm x 4 cm, 5 cm x 5 cm,
6 cm x 6 cm



5 cm x 8 cm



8 cm x 5 cm, 10 cm x 5 cm,
12 cm x 5 cm



8 cm x 8 cm
10 cm x 10 cm



12 cm x 10 cm



16 cm x 6 cm



16 cm x 10 cm



16 cm x 12 cm



16 cm x 17 cm

THREE UPGRADABLE VERSIONS

The CS 9600's flexible design allows you to upgrade to a larger field of view without replacing the unit when you want to grow into new areas.

CS 9600 12X10 EDITION

FOV: 4 cm x 4 cm to
12 cm x 10 cm

Ideal for implants, oral surgery, endodontics and most general dentistry.

CS 9600 16X10 EDITION

FOV: 4 cm x 4 cm to
16 cm x 10 cm

Ideal for complex implant cases, periodontics, oral surgery and most OMS.

CS 9600 16X17 EDITION

FOV: 4 cm x 4 cm to
16 cm x 17 cm

For all needs including maxillofacial surgery and orthognathics.